

47.5' DEED


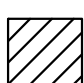

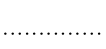



LOT AREA
10,890 SF±

84' DEED

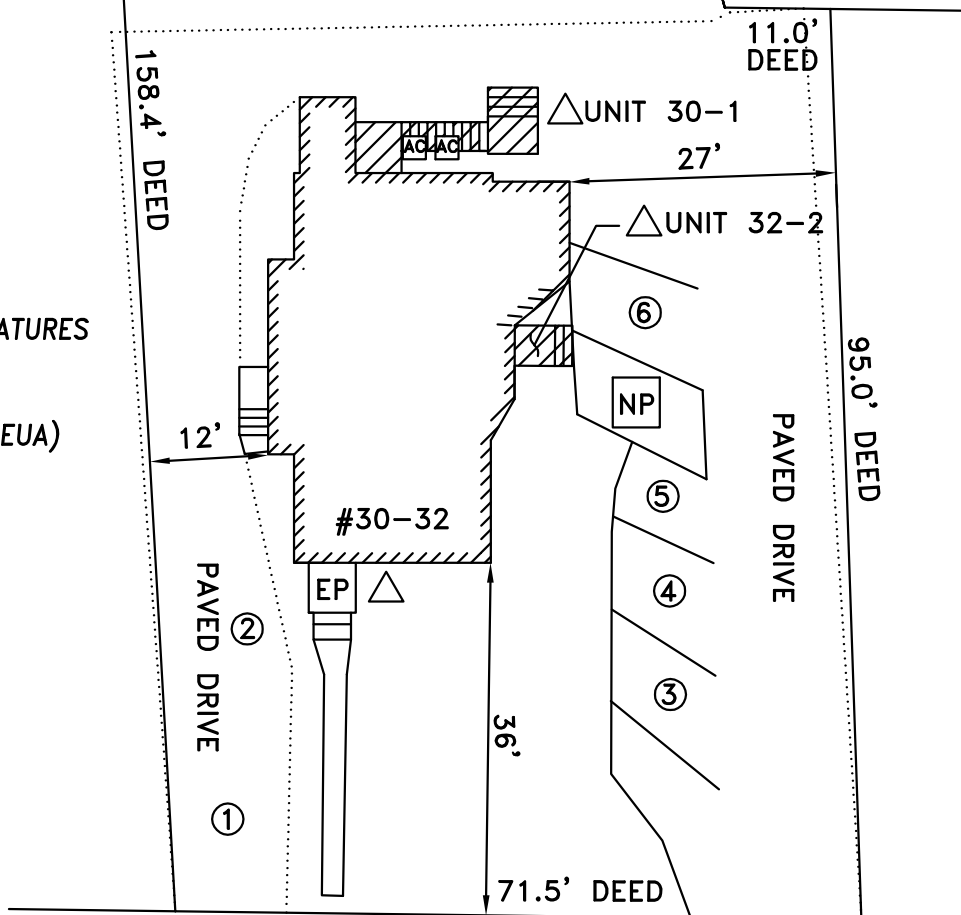
FOR REGISTRY USE ONLY

FIRST FLOOR UNIT 32-2
SECOND FLOOR UNIT 30-1

LEGEND

-  COMMON AREA AND FEATURES
-  EXCLUSIVE USE AREA (EUA)
-  INGRESS/EGRESS
-  EDGE OF PAVEMENT
-  ENTRANCE PORTICO
-  NO PARKING
-  SEWER MANHOLE

- PARKING KEY**
- ① ② ③ = UNIT 30-1
 - ④ ⑤ ⑥ = UNIT 32-2



*NOTE: THE CONDOMINIUMS SHOWN HEREON ARE FOR RESIDENTIAL USE.

**EAST CHESTNUT STREET
GRAPHIC SCALE**



(IN FEET)
1 inch = 20 ft.

REFERENCES

- DEED BK. 4583 PG. 128
- PLAN BK. 2170 PG. 84
- PLAN BK. 3695 PG. 217

I CERTIFY THAT LINES OF STREETS AND WAYS SHOWN ARE THOSE OF PUBLIC OR PRIVATE STREETS OR WAYS ALREADY ESTABLISHED. NO NEW LINES FOR DIVISION OF EXISTING OWNERSHIPS OR FOR NEW WAYS ARE SHOWN.

I ALSO HEREBY CERTIFY THAT THE PROPERTY LINES SHOWN HEREON ARE THE LINES DIVIDING EXISTING OWNERSHIPS, AND THE LINES OF STREETS AND WAYS SHOWN ARE THOSE OF PUBLIC OR PRIVATE STREETS ALREADY ESTABLISHED, AND THAT NO NEW LINES FOR DIVISION OF EXISTING OWNERSHIP OR FOR NEW WAYS ARE SHOWN.

I ALSO HEREBY CERTIFY THAT THIS PLAN FULLY AND ACCURATELY DEPICTS THE LOCATION AND DIMENSIONS OF THE BUILDINGS, AS BUILT, AND FULLY LISTS THE UNITS CONTAINED THEREIN, AND FURTHER FULLY AND ACCURATELY DEPICTS, LOCATES AND PROVIDES THE DIMENSIONS OF ALL LIMITED OF EXCLUSIVE USE COMMON AREAS AND FACILITIES OF THE CONDOMINIUM OUTSIDE OF ANY BUILDING.

**CONDOMINIUM MASTER SITE PLAN
for
30/32 EAST CHESTNUT STREET
in
SHARON MASSACHUSETTS**

Prepared for 30 E. Chestnut Street Realty Trust

NORTHERN ASSOCIATES

62 PARK STREET ANDOVER, MA. 01810 978-470-0315

SHEET NO:1 OF 2

DATE: 5/8/17

DRAWN BY:T.F.S